

Müllner appartements

Müllner Appartements

holiday apartment in Thiersee

Schmiedtal 30 · A-6335 Thiersee · office@appartements-tirol.at · +43 664 2066738
Further information available at <https://appartements-tirol.at/>

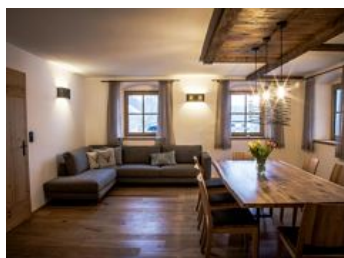
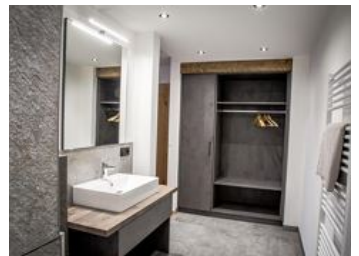
Müllner Appartements

holiday apartment in Thiersee

"A 350-year-old farmhouse that we have lovingly renovated."

Welcome to the Müllner Apartments! We are looking forward to welcoming you to our new, rustic & family-friendly farm in Thiersee – Schmiedtal starting in spring 2023.

In 2019, we decided to breathe new life into our centuries-old Müllnerhof, with great attention to detail. Without compromising on luxury & comfort, you will stay in historic walls filled with charm and flair of the highest quality. On a sunny hill, amidst forests an...

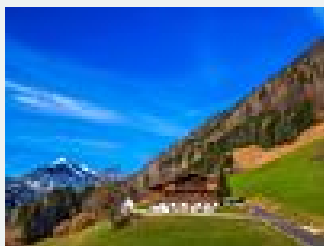


Facilities

quiet location · right on the river · near the forest · private setting · located on a hill · meadowlands · romantic surroundings · lake – distance (m): 1500 · mountain location

Rooms and apartments

Current offers



Apartment, shower and bath, toilet, 2 bed rooms

Two newly renovated apartments for 2–6 people:

In the Müllnerhof there are two newly designed apartments that offer space for 1–4 or 2–6 people for a relaxing time.

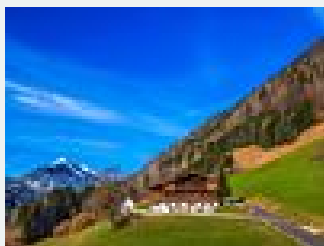
The living areas impress with t...

2–4 Personen · 2 Bedrooms · 135 m²

ab
€ 110,00

per apartment on 09.05.2025

[To the offer](#)



Apartment, shower and bath, toilet, 3 bed rooms

Two newly renovated apartments for 2–6 people:

At Müllnerhof, there are two newly designed apartments that offer space for 1–4 or 2–6 people for a relaxing time.

The living areas impress with thei...

2–6 Personen · 3 Bedrooms · 140 m²

ab
€ 170,00

per apartment on 09.05.2025

[To the offer](#)

Conditions

Summer: In summer, Lake Thiersee invites you to enjoy yourself. For hiking or biking tours, we are the perfect starting point, and you can reach your destinations directly from the house. For sunbathers, our house offers the necessary tranquility.

Winter: In winter, you can enjoy wonderful walks, ice skating, cross-country skiing, tobogganing, or skiing. The ski resorts "Schneeberglifte" or "Tirolina" can be reached by car in 5 minutes and are ideal for families. The ski world "Wilder Kaiser" is 35 minutes away. On the Bavarian side, Sudelfeld is reachable in about 20 minutes. Just before that is the top cross-country skiing area Bayrischzell-Thiersee. Tobogganing by day and night is possible from Kala Alm.

Müllner Appartements

holiday apartment in Thiersee

Schmiedtal 30

A-6335 Thiersee

E-Mail: office@appartements-tirol.at

Telephone: +43 664 2066738

<https://appartements-tirol.at/>